

***H. kikutii* var. *yakusimensis* (Masamune) F. Maek.**

*Journal of the Faculty of Science, Imperial University of Tokyo, Section 3, Botany,*  
Vol. 5:374, 375, 376, ic. 42. 43, 44 1940.

ヒメヒョウガギボウシ = 姫日向擬宝珠 = Hime Hyūga (≈ small Hyūga) Gibōshi

***History, Nomenclature and Habitat:*** The *H. kikutii* complex is widespread and shows distinct local phenotypes. Among these are smaller forms with narrow leaves, which distinguishes them from *forma typica* of *H. kikutii* var. *kikutii*. It is also differentiated by the number of principal veins, scape posture and length. populations. This variety is well known in Japan and has been cultivated there under its Japanese name ヒメヒョウガギボウシ (= Hime Hyūga Gibōshi), given by F. Maekawa in 1940. The transliterated Japanese name translates to “small hosta from Hyūga.” Although the name Hyūga Gibōshi alludes to the old province of Hyūga-no kuni (日向国) in western Kyūshū (九州), where the type of *kikutii* var. *kikutii* was found, *H. kikutii* var. *yakusimensis* originates further south. Named for Yakushima Island, its habitat spreads over northern Satsunan Islands locations (薩南諸島) in the Ōsumi shotō (大隅諸島) island group. Located at the southern tip of the Japanese



***H. kikutii* var. *yakusimensis* (cult.) Bud initial development**  
Hosta Hill R.G. © W.G. Schmid 1985.07.23  
HH10498308 1983 Vouch. Loc. cit.: Yakushima (屋久島 大隅諸島)



***H. kikutii* var. *yakusimensis***

Hosta Hill R.G. © W.G. Schmid HH10498308 1983 Vouch. Mid to late August

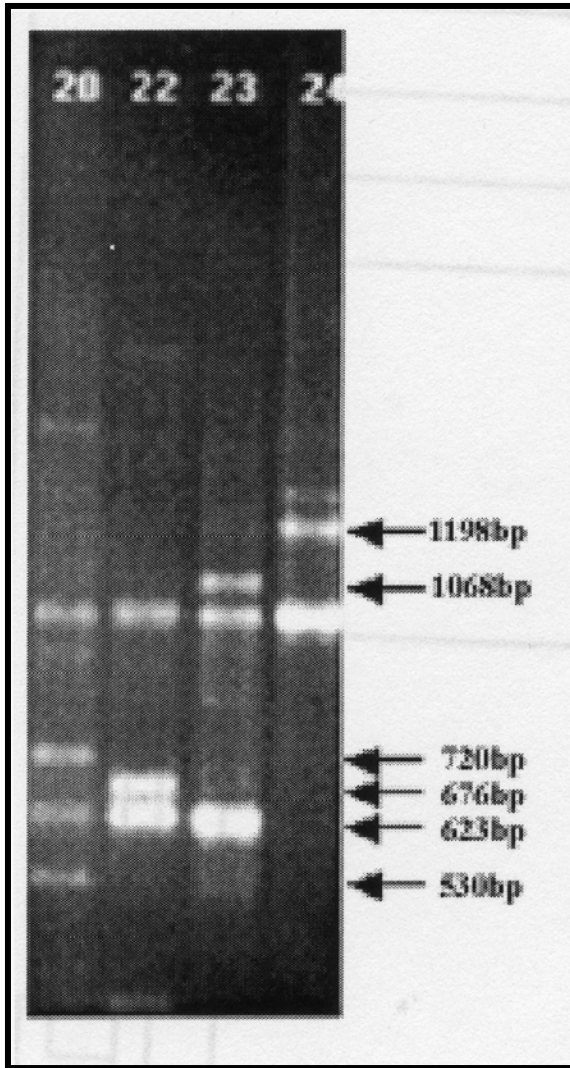
Loc. cit.: Yakushima, Ōsumi shotō (屋久島 大隅諸島)

archipelago, the Ōsumi shotō includes the islands of Tanegashima (種子島; 446 sq. km/172 sq. miles) and Yakushima (屋久島; 503 sq. km/ 194 sq. miles) on which the warm, subtropical climate fosters rich vegetation. The type specimen of *H. kikutii* var. *yakusimensis* is in TI (No. 103), collected by Suzuki on Yakushima Island (屋久島). This island is also the southern habitat of *H. kikutii* f. *leuconota* Schmid (1991), which see. Sporadically, this taxon ranges north to Ehime-ken (愛媛県) on Shikoku Island (四国). One of the types recorded by Maekawa is from Yokogurazan (横倉山) in Kōchi-ken (高知県; former Tosano-kuni; 土佐国), Takaoka-gun (高岡郡) near Ochi-chō (越知町), where several populations were observed. *H. kikutii* var. *yakusimensis* has lanceolate leaves with 5–8 (9) pairs of principal veins. The leaf length also varies considerably. Also variable are the leaf margins, which can be straight or undulate. It should be noted that these variations are common within all *H. kikutii* populations.

***Plant Morphology:*** Note: The description below is average for this varietas. *H. kikutii* var. *yakusimensis* is polymorphic and shows macromorphological differences in its natural populations. Variants have lanceolate leaves with 5–8 (9) pairs of principal veins. Petiole/leaf transition is decurrent to the petiole and leaf length varies. Leaf margins can be straight or undulate. In most individuals, the flower morphology is very uniform.







◀ Fig A: DNA Banding Pattern

20 = *H. kikutii* var. *kikutii*

22 = *H. kikutii* var. *caput avis* (*H. kikutii* var. *tosana*)

23 = *H. kikutii* var. *polyneuron*

24 = *H. kikutii* var. *yakusimensis* (*H. kikutii* var. *kikutii* f. *leuconota* is considered a morph).

**DNA Banding:** Recent RAPD analysis (Y. Yu, 2002; Sauve, R.J., S. Zhou, Y. Yu, and W.G. Schmid. 2005) has established the banding patterns of four closely related *H. kikutii* species accessions in section Rynchophorae (See Fig. A). The banding pattern illustrated in Fig. A shows comparison using a single primer OPB-02 = (5'-TGATCCCTGG-3') and the species were differentiated with the single primer OPB-02 and *H. kikutii* var. *yakusimensis* is therefore considered a distinct infraspecific taxon in section Rynchophorae.

*H. kikutii* ▶▶▶  
 var. *yakusimensis*  
 Elongating scapes  
 with bud initials  
 Hosta Hill R.G.  
 © W.G. Schmid  
 HH10498308 1983  
 Loc. cit.: Yakushima  
 (屋久島 大隅諸島)



## ***Taxonomic Type and Synonymy:***

*H. kikutii* var. *yakusimensis* (Masamune) F. Maek.

*Journal of the Faculty of Science, Imperial University of Tokyo, Section 3 Botany, Vol. 5:374, 375, 376, ic. 42. 43, 44 1940.*

Type.: Coll. Suzuki pl. Hortus Maekawa No. 103; et. T. Yoshinaga in Hortus Kikuchi; loc. cit.: Yokogurazan (横倉山), Kōchi-ken (高知県; former Tosano-kuni; 土佐国), Takaoka-gun (高岡郡) near Ochi-chō (越知町).

Hab.: Southern Kyūshū region (九州地方, Kyūshū-chihō) in Kagoshima-ken and northern Satsunan Islands (薩南諸島) location in the Ōsumi shotō (大隅諸島) island group and on Shikoku Island (四国) in Kōchi-ken (高知県) and Ehime-ken (愛媛県), Japan; in shady forests and sub-montane areas in flooding river valleys and rocky banks, occasionally wet montane soils with rocky base.

### ***Botanical Synonyms:***

Included here are references to *H. sieboldiana* var. *yakusimensis* Masamune: *J. Society of Tropical Agriculture*, 4:301 1932, which is used by Maekawa (1940) as the basionym for *H. kikutii* var. *yakusimensis*; as pointed out in Fujita (1976), Masamune's taxon is an early-blooming form of *H. montana* and is not related to *H. kikutii* other than serving as the basionym.

*H. sieboldiana* var. *yakusimensis* Masamune: *J. Society of Tropical Agriculture*, 4:301 1932 (basionym); and *Florist. Geobotanical Studies of Yakushima*, p. 553 1934;

*H. yakusimensis* Maekawa: *Encyclopedia of Horticulture*, 2:633 1950 (p.p. basionym tant.; excl. Masamune's described early blooming populations of *H. montana* from Kosugidani (小杉谷), Yakushima (屋久島), Kagoshima-ken (鹿児島県).

*H. caput-avis* Ohwi: *The Flora of Japan*, 11:291 1965; p.p. (as *H. polyneuron*)

*H. kikutii* var. *caput-avis* Fujita: *Acta Phytotax. et Geobot.*, Vol. 27, 3/4:78 1976; (sensu lato; excl. the p. p. placement of this taxon with *H. sieboldiana*/*H. montana*).

### ***Japanese Synonyms:***

ヒメヒョウガギボウシ = 姫日向擬宝珠 = Hime Hyūga Gibōshi (≈ small Hyūga Hosta)

### ***Horticultural Names and Synonyms:***

*H. kikutii* var. *yakusimensis* 'Gosan'; a collected clone of the varietas from Hosta Hill R.G. HH10808607 1986.

*H. kikutii* var. *yakusimensis* 'Kosugidani' (see pages 6 and 7).

***H. kikutii* var. *yakusimensis* in Cultivation:** Different clones collected from wild populations represent *H. kikutii* var. *yakusimensis* in cultivation. One of the earliest examples dating from 1967 Summers No. 59 (from Hirao in Summers 1972) was subsequently thought to be a *H. 'Lancifolia'* hybrid, but that identification was never confirmed. Several accessions originated with W.G. Schmid, and other academic sources. As with other *H. kikutii* varieties and forms, the polymorphic nature of this variant is reflected in cultivated specimens. Although uniform in its





***H. kikutii* var. *yakusimensis***  
 Elongating scapes with buds  
 Hosta Hill R.G. © W.G. Schmid  
 HH10498308 1983; Loc. cit.: Yakushima  
 (屋久島 大隅諸島)



***H. kikutii* var. *yakusimensis***  
 Emerging shoots  
 Hosta Hill R.G. HH10498308 1983  
 ©W.G. Schmid: 1987.04.11  
 Ex: Ōsumi shotō  
 鹿児島県 大隅諸島 産

flower morphology, this taxon shows considerable variation in the leaf sizes and shapes. The specimens respond to good cultivation practice and well prepared soil. Given copious moisture, cultivated specimens will grow plentifully and larger than in the wild. Most offered in the trade (as 'Gosan' form) are Hosta Hill R.G. types from Kagoshima-ken (鹿児島県).

### ***Horticultural Progeny and Sports:***

A limited number of clones were brought into the U.S. and those available have similar morphology and because of this the wide differences seen in other *H. kikutii* varieties cultivated in gardens is not as apparent (but does exist in wild populations!). This taxon has seen very little use in hybridizing and, considering its merits, it has seen no recorded use as a pod parent. The AHS *Hosta* Registrar's Web Site ([HostaRegistrar.org](http://HostaRegistrar.org)) shows only one registered cultivar involved in a cross with *H. kikutii* var. *yakusimensis* (in this case as a pollen parent ♂), namely

*H.* 'Bojangles' = ♀ *H.* 'Swoosh' × ♂ (*H. kikutii* var. *yakusimensis*) by D. Dean 1999.

Sports and plastogenic mutations are unknown, but may exist in private hands in Japan and the West. One of the named Japanese clones is *H.* 'Kosugidani' listed by

the Gotemba Nursery. Its Japanese name is ヒメヒョウガギボウシ ‘小杉谷’ (*H. kikutii* var. *yakusimensis* ‘Kosugidani’.) The name is that of a former settlement which was home to more than 500 loggers and their families in the 1920s on Yakushima Island (屋久島). This named cultivar looks much like the species.



▲ *H. kikutii* var. *yakusimensis* ►  
 Hosta Hill R.G. © W.G. Schmid HH10498308 1983  
 Mid to late August; l.c.:Yakushima, Ōsumi shotō  
 (屋久島 大隅諸島)



▲ Early anthesis ▲  
 and  
 ◀ Opening bud stage ▶



*H. kikutii* var. *yakusimensis* ►  
 Hosta Library  
 © Bob Axmear  
 Note the leaf size as compared to that of companion hostas on top of picture.





*H. kikutii* var. *yakusimensis*  
Hosta Hill R.G. © W.G. Schmid 1984.07.29  
HH10498308 1983 Mid to late August; l.c.:Yakushima, Ōsumi shotō  
(屋久島 大隅諸島)

### **References:**

- Chung, M.G. and S.B. Jones. 1989. Pollen morphology of *Hosta* Tratt. (Funkiaceae) and related genera. *Bulletin of the Torrey Botanical Club*, Vol. 116, 1:31–44.
- Currie, H.E., 1988. *Biosystematics of the Eastern Asian species of Hosta*. University of Georgia, Athens. (Personal communications).
- Erdtman, G., 1966. *Pollen morphology and plant taxonomy*. Angiosperms. Hafner Publishing Company, New York.
- Fujita, N., 1976. The genus *Hosta* (Liliaceae) in Japan. *Acta Phytotaxonomica et Geobotanica*, Vol. 27, 3/4:77-80 1976.
- International Code for Botanical Nomenclature* = ICBN, adopted by the International Botanical Congress, Nomenclature Section, Vienna Code 2005.
- International Code of Nomenclature for Cultivated Plants* = ICNCP, adopted by International Commission for the Nomenclature of Cultivated Plants of the International Union of Biological Science, IUBS Division of Botany, 2004. *nica*, Vol. 5:38–40.
- Maekawa, F., 1940. *J. of the Faculty of Science*, Sect. 3 Botany, Vol. 5:375, ic. 3, 4 p. 324 1940
- Maekawa, F., 1950. *Giboshi* in Ishii, *Engei-daijiten* (Big Dictionary of Garden Craft), Tokyo, 2:633–638.



- Maekawa, F., 1969. *Hosta Trattinnick*. In *New Encyclopedia of Horticulture*, Seibundoshinkosha, Tokyo, Vol. 3:1105–1109.
- Maekawa F. 1952 in Nakai, T. *Iconographia Plantarum Asiae-Orientalis*, Tokyo, 4:496–497.
- Murata, G., and H. Koyama. 1980. 襲速紀地域を中心とした日本太平洋側フロラの特徴について (Characteristics in the flora of the Pacific side of Japan). *Memoirs of the National Science Museum*. Vol.13 (19801201) pp. 155-168.
- Ohwi, J., 1953; (1965). *The Flora of Japan* (日本植物誌; 1953 in Japanese; in 1965 in English). Edited by Smithsonian Institution, Fam. 52, 11:287–291.
- Ohwi, J., 1965. *The Flora of Japan*, Edited by F. G. Meyer and E. H. Walker, Smithsonian Institution, Fam. 52, 11:287–291.
- Sauve, R.J., S. Zhou, Y. Yu, and W.G. Schmid. 2005. Random amplified polymorphic DNA (RAPD) analysis in the genus *Hosta*. *HortScience* 40(4).
- Schmid, W.G. 1991. *The genus Hosta: Gibōshi Zoku* (ギボウシ属). London and Portland: Timber Press.
- Schmid, W.G. 1986. A brief survey of the *H. kikutii* complex. *Bull. Brit. Hosta Hemerocallis Soc.* Vol. 1; No. 4:7-12.
- Schmid, W.G. 2004. *Hosta* species and DNA fingerprinting. *Bull. Brit. Hosta Hemerocallis Soc.* Vol. 2004: 50, 59-66.
- Schmid, W.G. 2006/2007. *Hosta Species Update* in HostaLibrary.org under *H. kikutii* var. *polyneuron*.
- Summers, A. J., 1972. *Numbered Acquisition List*, Hortus Summers, A. J. 1964 through 1972 (Unpublished; contributed by A. J. Summers 1983).
- Watanabe, K., 1985. *The observation and cultivation of Hosta* [渡辺健二著 ギボウシの観察と栽培]. New Science Company, Gotemba, Tokyo]
- Yu, Y. 2002. Classification of hosta species and cultivars based on RAPD analysis. TSU Graduate School (with W.G. Schmid); published in summary in Sauve, R.J., S. Zhou, Y. Yu, and W.G. Schmid. 2005 (which see).
- Zilis, M.R. 2009. *The Hostapedia*. Rochelle: Q & Z Nursery, Inc.
- Zonneveld, B.J.M. and F.Van Iren. 2001. Genome size and pollen viability as taxonomic criteria: Application to the genus *Hosta*. *Plant Biology*, 3, pp. 176-185. G. Thieme Verlag: Stuttgart.

© W.George Schmid 2010: The text and illustrations are copyrighted and are available for personal reference only. Other contributors retain their copyright of featured photographs as noted in captions. The content may not be published in printed form without the author's written permission.

Web quote reference:

W. George Schmid HostaLibrary.org/species/.